

# S.

## Syllables

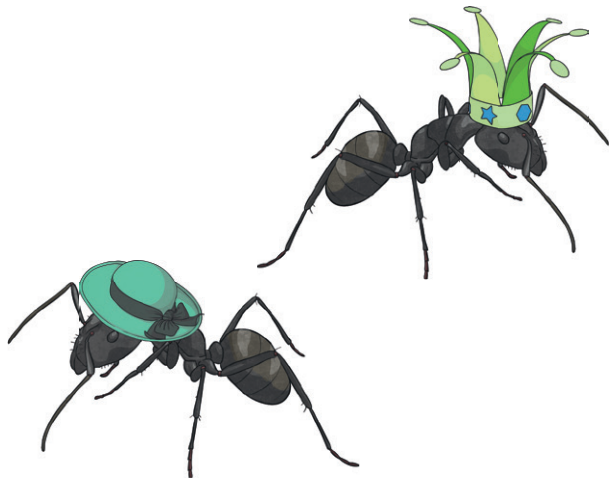


elephant el / e / phant

Wednesday Wed / nes / day

February Feb / ru / a / ry

hippopotamus ...?



# S.S.

## Silly Sentence



laugh **L**aughing **a**nts **u**nder **g**reen **h**ats.

said **S**illy **a**liens **i**gnore **d**inosaurs.

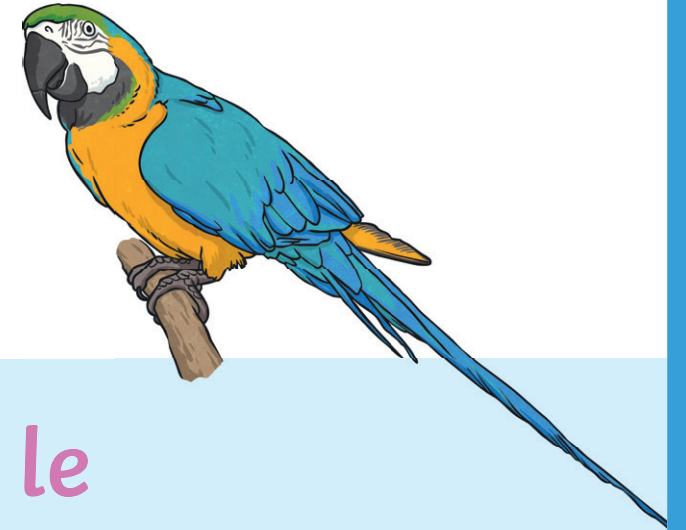
was **W**ash **a** sock.

because ...?



# S.I.S.

## Say It Silly



people    pe / op / le

scissors    sc / iss / ors

knife    k / nife

beautiful    ...?



# W.W.W.

## Words Within Words

orchestra

weird

excellent

business

through?

